

SILAMIRZAD

Residential Complex





Content.

01

About lotus

02

Existing Status

03

Concept

04

Architectural Volume

05

Interior Design

06

Architectural Plans

About Lotus

About Lotus

Lotus Economic and Engineering Group

Lotus Company initiated its activities as an economic enterprise in the field of construction and luxury development in District 1 of Tehran, in 2008. With a focus on quality, innovative design, and unique customer experience, the company aims to become a leading brand in real estate development in Iran as well as the region. Through active participation in the local market, subsidiaries of Lotus have also engaged in subsets of development where the mission is to improve the life style of customers by creating innovative and sustainable buildings. These goals are pursued with a commitment to ethical values and the use of modern equipment to achieve optimal impact on society and the environment. Lotus has assembled a team of over 700 skilled and efficient personnel to achieve these objectives. To date, the company has completed more than 20 projects.

We believe long-lasting monuments in Iran have roots in similar characteristics where Persian geometry plays a critical role. Iranian archetypes such as Muqarnas and Eslimi combined with spacious areas where the landscape is planned by water and gardens, remind the eternity of paradise and glory of history for the Iranian elites. A modern version of this concept can be found in the designs and architecture of Lotus projects. Luxurious amenities such as swimming pools, tennis courts, and mini golf, mixed with handmade mirror works, symmetric patterns, and floating spaces, attract Iranian high-profile customers to live a contemporary life while being in touch with their heritages.

Shahrazad

Shahrazad is a legendary Persian queen who is the storyteller in **One Thousand and One Nights**.

One Thousand and One Nights is a collection of Middle Eastern folktales compiled in the Arabic language during the Islamic Golden Age. The work was collected over many centuries by various authors, translators, and scholars. Common to all the editions of the Nights is the framing device of the story of the ruler Shahryar being narrated the tales by his wife Shahrazad, with one tale told over each night of storytelling. The stories proceed from this original tale; some are framed within other tales, while some are self-contained.



One Thousand and One Nights character
Scheherazade,
19th century painting by Sophie Anderson

Shahrzad

Shahrzad, a prestigious residential project setteled in Tehran's vibrant District 5. Our visionary approach revolves around maximizing the utilization of the surrounding amenities while mitigating any negative impact from external factors such as highways and schools, which could disrupt the tranquility of our residential units.



Watch Video





Introduction

Shahrzad, boldly presents its primary facade towards the serene western side of the complex, harmoniously integrating an urban plaza that serves as a peaceful intermediary space between the bustling city and our residential haven.

Introduction

**REACH
THE HIGH POINT
OF YOUR LIFE.**

















Existing Status

Existing Status

The Shahrazad project of Lotus Group is located at the corner of Bahar Blvd. in the vicinity of Abshanasan highway with quick access to Sattari highway in the 5th district of Tehran.

02

Location



Sattari Hw

Abshenasan Highway

W.Bahar

Sardar Jangal Blv



Existing Status



View







**EMBRACE
A GREENER
LIFESTYLE
WITHOUT
SACRIFICING
SOPHISTICATION**

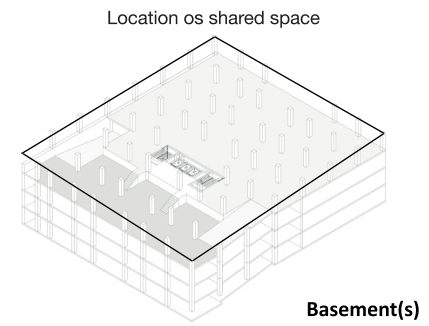
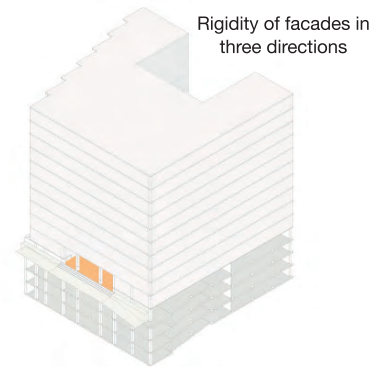
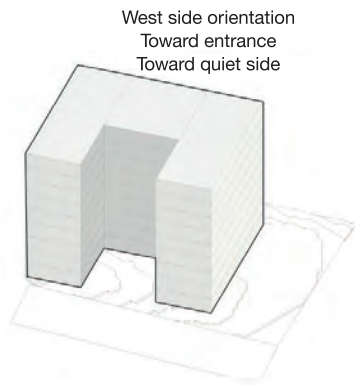
Concept

Concept

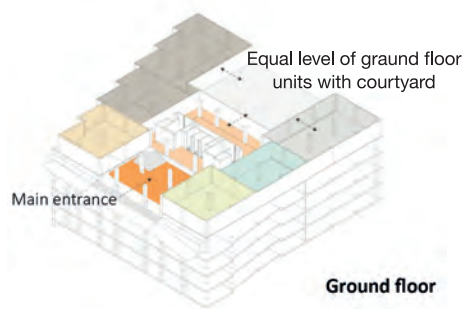
Shahrazad is a legendary Persian queen who is the storyteller in One Thousand and One Nights.

03

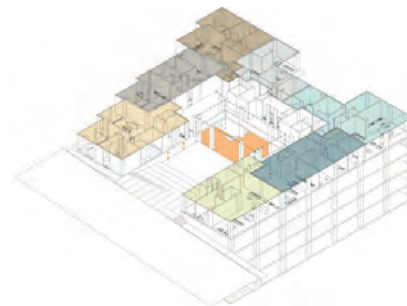
Concept



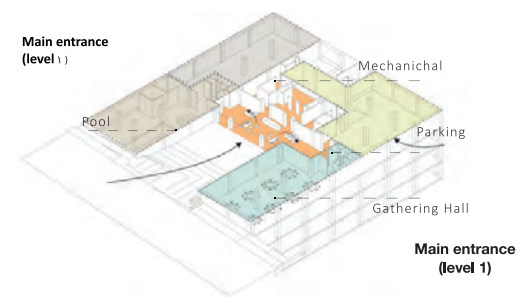
Basement(s)



Ground floor



Ground floor

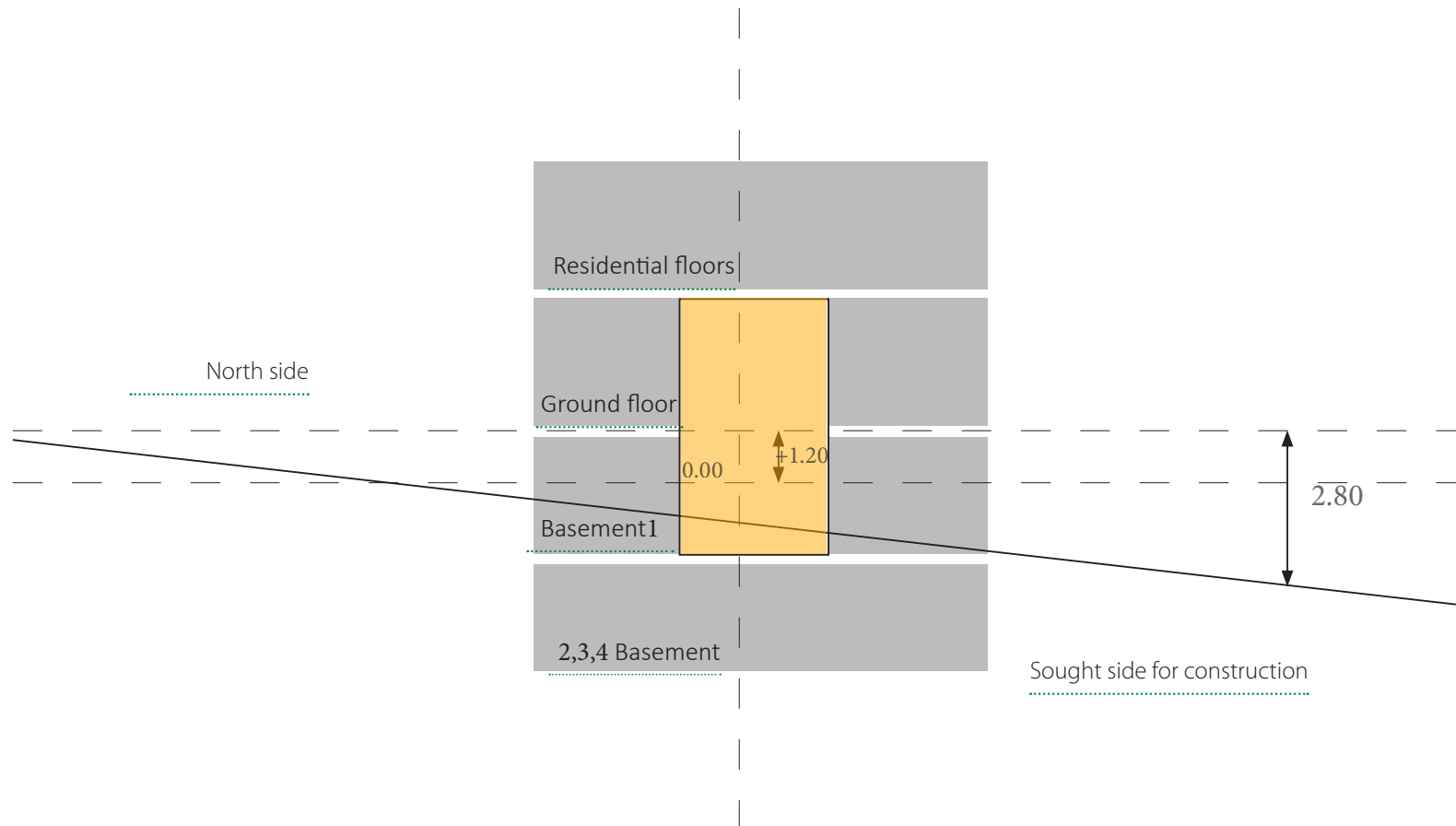


Main entrance (level 1)



Section

Using natural slope for defining entrance





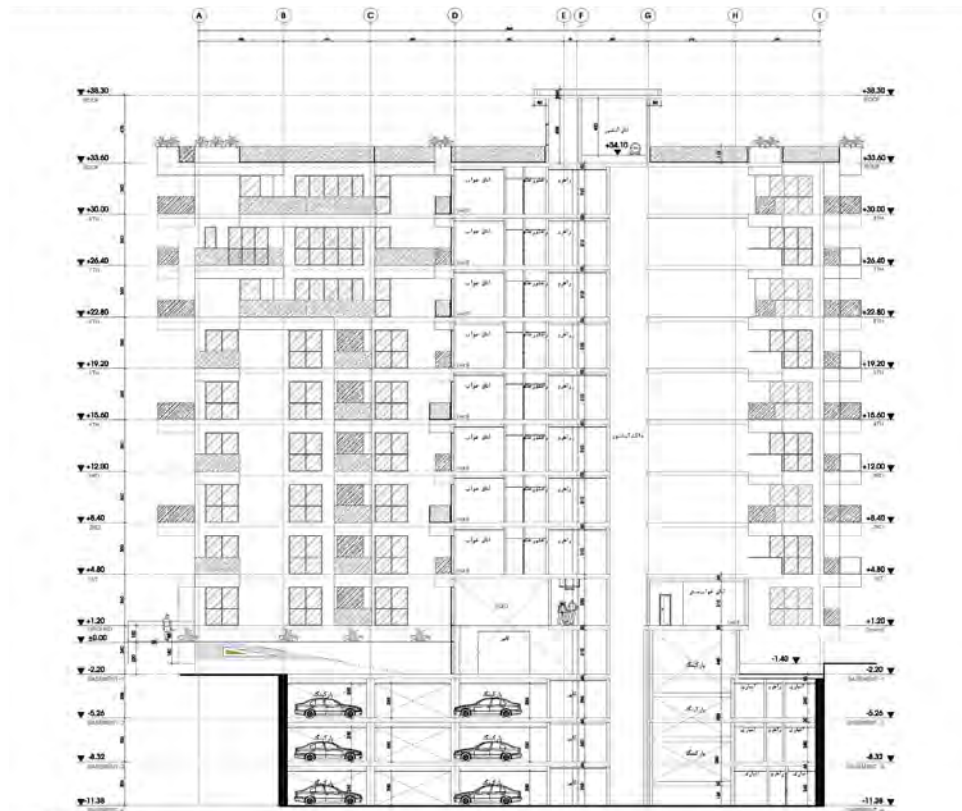
Architectural Volume

Architectural Volume

The architectural composition of our development has been meticulously designed to enhance the living experience. Each unit boasts lush green terraces, offering not only an elevated quality of interior spaces but also providing an exquisite visual aesthetic and an environmentally conscious atmosphere that seamlessly blends with the cityscape. At Niyayesh, we are committed to delivering unparalleled architectural excellence, creating a harmonious fusion of form and function that truly elevates urban living to new heights.

04

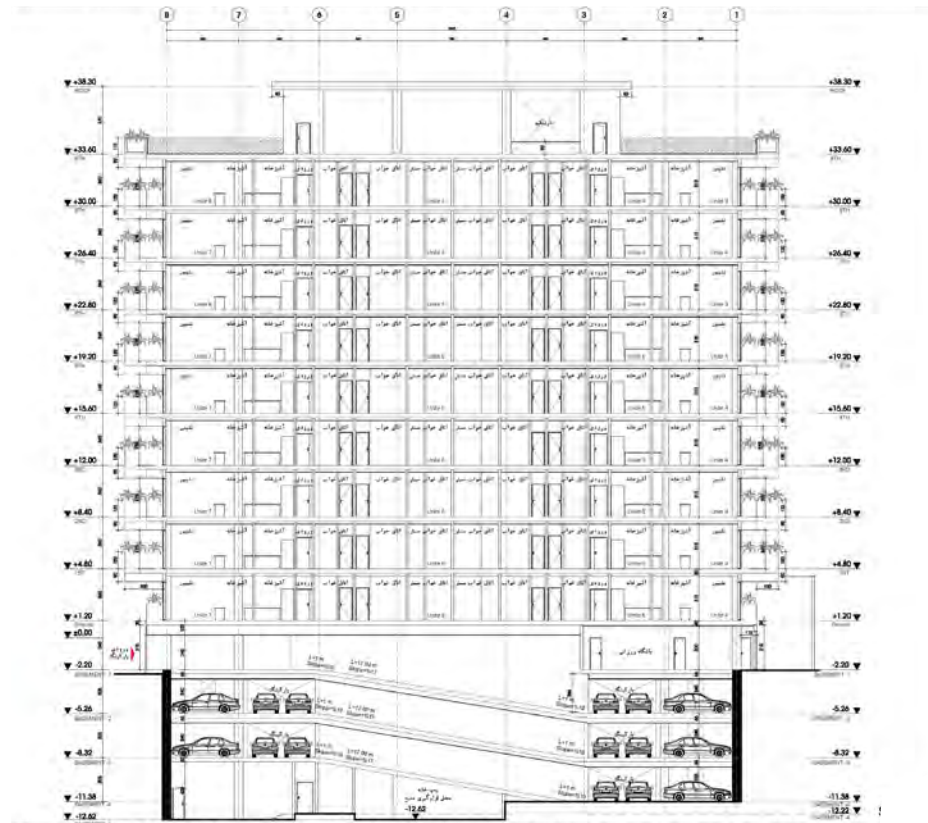
Section A-A



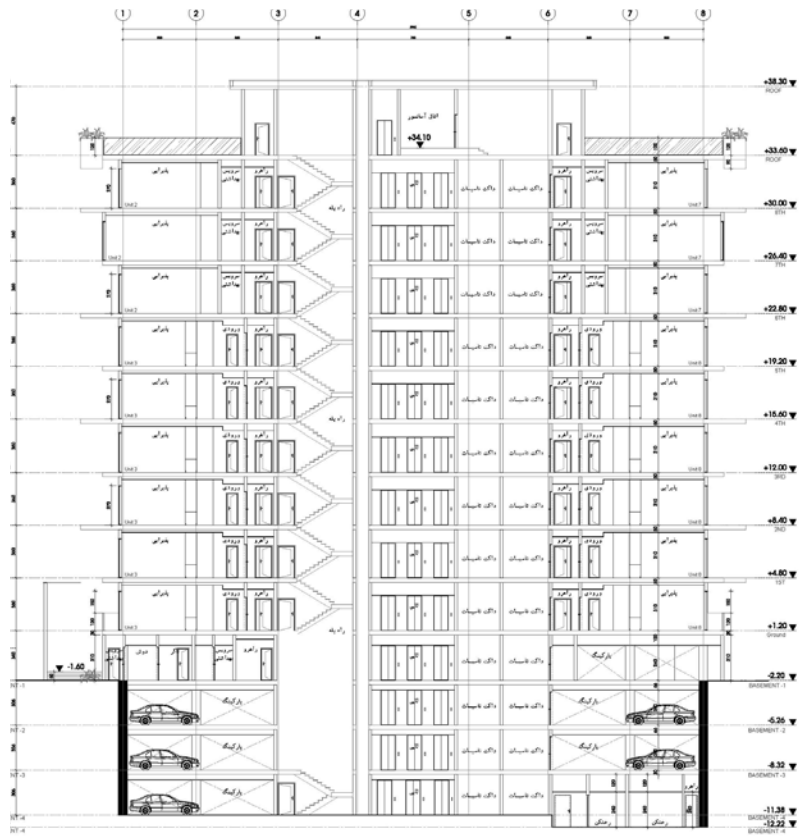




Section B-B



Section C-C



Interior Design

Interior Design

Explore and discover a meticulously curated residential masterpiece that embodies architectural ingenuity, environmental consciousness, and an unwavering dedication to a superior quality of life.

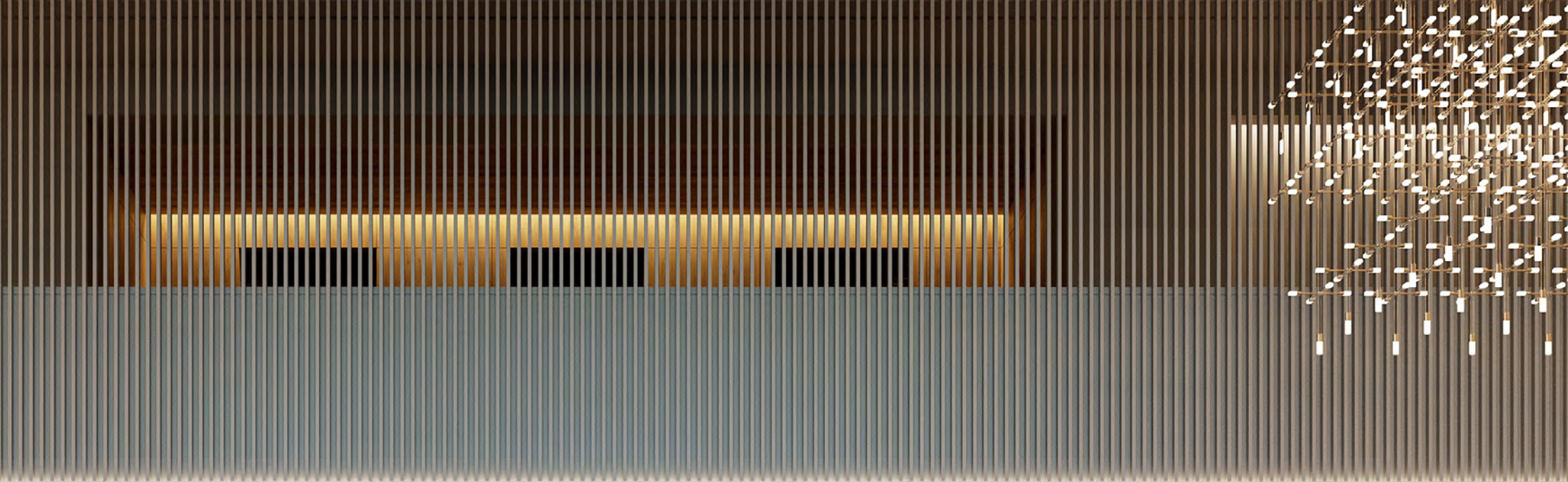
05











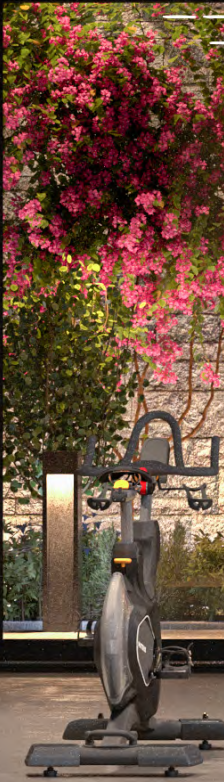




























B4









The central focus of the room is a bed with a low-profile, light-colored wood frame. The headboard is composed of vertical wood slats, with a warm, ambient glow emanating from a recessed light strip just below it. The bed is dressed in a grey sheet, a brown blanket, and a black and white checkered duvet. Two pillows are placed at the head of the bed: a solid black one and a black and white striped one. On either side of the bed are matching bedside tables with a light wood top and a dark wood base. The left table holds a stack of books, a framed photograph, and a small white object. The right table holds a round alarm clock and a modern, minimalist lamp with a yellow glow. The bed is positioned against a wall with a light-colored upper section and a wood-paneled lower section. To the left, a white wardrobe with a vertical handle is visible. To the right, a window is covered with sheer white curtains, and a wooden chair with a cane seat is partially visible in the foreground.



































Architectural plans

Architectural plans

The architectural composition of our development has been meticulously designed to enhance the living experience. Each unit boasts lush green terraces, offering not only an elevated quality of interior spaces but also providing an exquisite visual aesthetic and an environmentally conscious atmosphere that seamlessly blends with the cityscape. We are committed to delivering unparalleled architectural excellence, creating a harmonious fusion of form and function that truly elevates urban living to new heights.

06





Architectural plans

12 Floors | 74 Units

3th Floor Plan

Total Parking Lots: 45

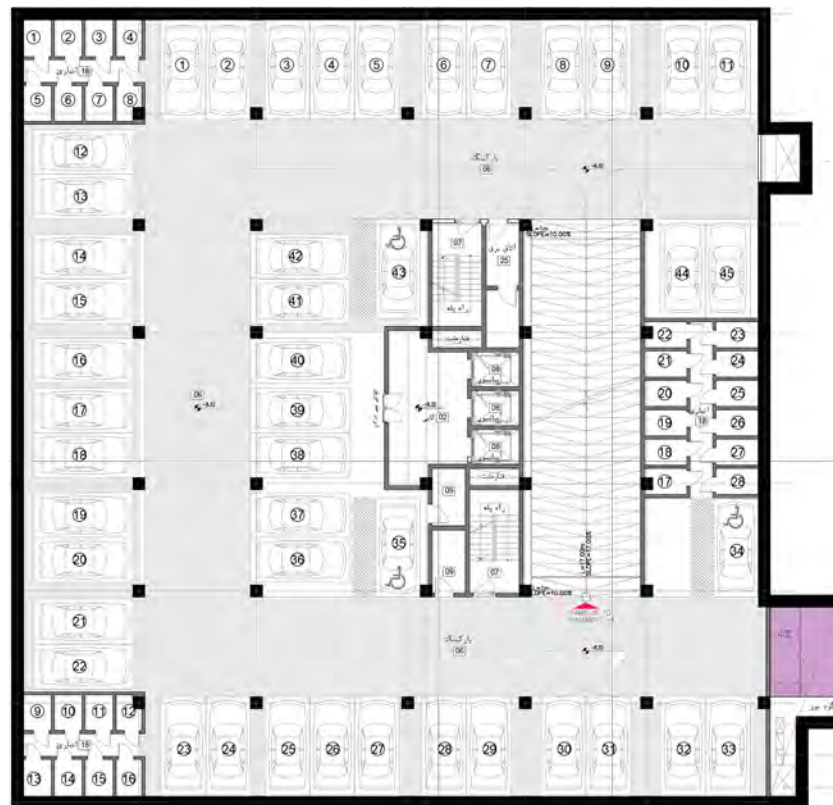
Total Storage Lots: 28





2nd Floor Plan

Total Parking Lots: 45
Total Storage Lots: 29





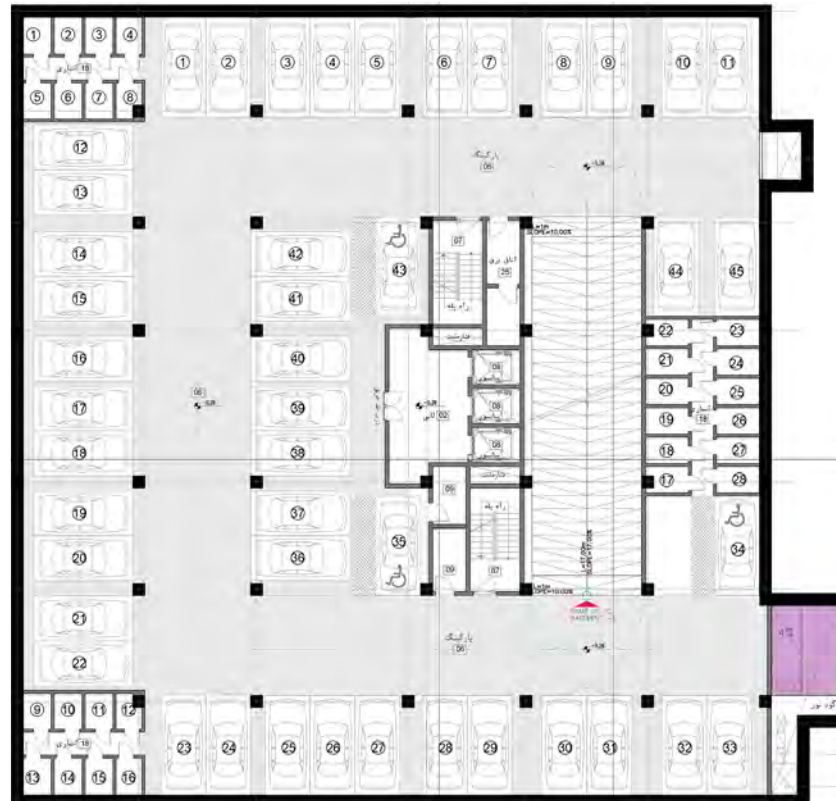
B4

CAMARO

1st Floor Plan

Total Parking Lots: 03

Total Storage Lots: 01



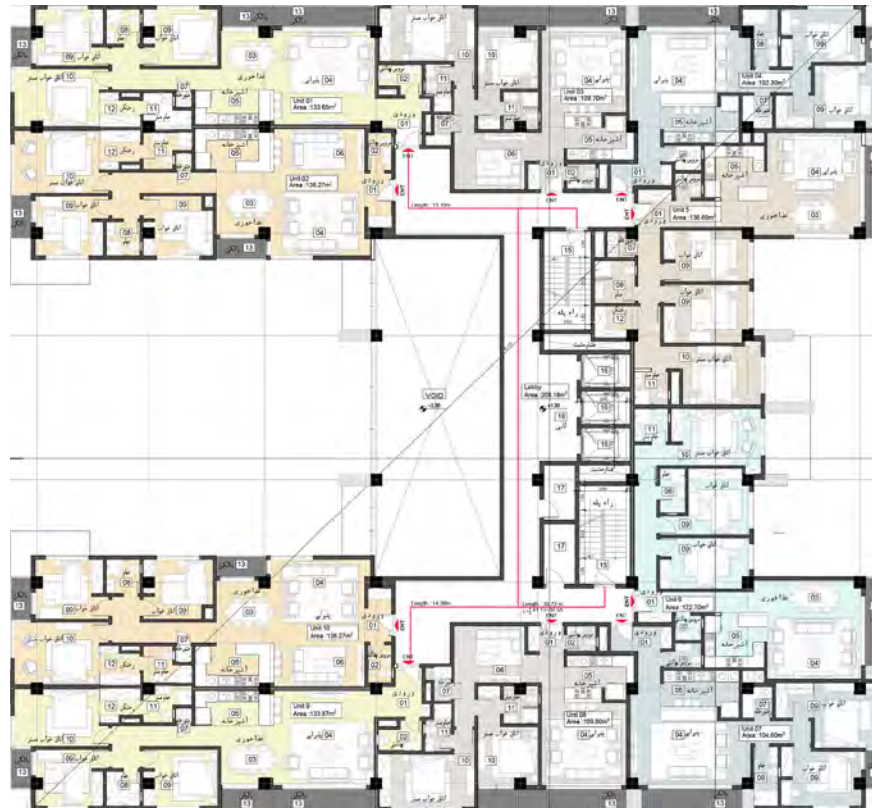
Ground Floor Plan

Total Unit Lots: 10



1st Floor Plan

Total Unit Lots: 11





2nd Floor Plan

Total Unit Lots: 11





3rd Floor Plan

Total Unit Lots: 11





6th Floor Plan

Total Unit Lots: 09





7th Floor Plan

Total Unit Lots: 09





8th Floor Plan

Total Unit Lots: 09







Address : No. 9, Shadi Alley, Shad Avar St., Moqadas Ardebili St., Mahmoudieh, Tehran, Iran
Tel : (021) 22 66 12 01 - 8 Fax : (021) 26 20 54 86 Website : www.Lotusgr.com